

# THE BEST RESORT BY A DAM SITE

1-800-325-5780



WWW.VDL.COM





# WE'RE THE BEST FAMILY PLACE TO RELAX – OR FISH – OR SWIM – OR EXPLORE ...

## WHAT'S SO SPECIAL ABOUT LAKE VERMILION?

Considered by many to be among the world's most beautiful lakes, Vermilion is also big. Boating from one end to the other is 38 miles of scenic beauty! Lake Vermilion is the southernmost Canadian Shield Lake offering breathtaking scenery carved by glaciers. Its clear waters touch 1,200 miles of shoreline, and are filled with 365 islands. The area is rich to wild-life for the watcher or hunter; you'll find grouse, waterfowl, deer and bear. If fishing is your game, this lake offers a long history of record size and "boat filling" catches. Varieties include walleye, northern pike, large and smallmouth bass, crappies, bluegills, perch and muskies. A walleye hatchery, northern rearing pond, and musky stocking program ensure that fish populations will always be healthy. Ask any fishing expert about Vermilion and you're bound to hear numerous fishing legends!

Unique location, quality accommodations and superior service makes our resort special. Our staff is dedicated to providing our guests with everything they need to ensure a relaxing and memorable vacation. From docking your boat to delivering firewood and helping you get set up for the day. Our resort sits on 60 acres of pristine woodlands, nestled in Wolf Bay, a well-protected corner of Lake Vermilion surrounded by federal and state wilderness forests. The resort is centrally located on the lake providing easy boating access to both the east and west basins of the lake. The views from anywhere on our grounds are always astonishing. Our guests enjoy the beautiful lakeside views of sparkling clean waters along with the sights and sounds of the rapids cascading off the lake and forming the start of the Vermilion River. There are some great fishing spots located near the resort.

You really don't have to travel far to catch any species the lake offers. If you want to stay close there is great fishing right off the resort docks or wadding out knee deep into the current in front of the dam to fish one of the hottest bass spots on the lake. In addition, our guests love fishing the one mile stretch of river directly behind the resort at the base of the rapids. For the fisherman that want to explore the lake and fish the diverse variety of shorelines, reefs, Islands, sandbars and weed beds they will find the lake very well marked for navigation and easy to find goods fishing spots. For those guests that enjoy exploring and taking in the scenery of the outdoors there are several great trails around the resort to hike, explore, and photograph wildlife.

The resort has 24 modern vacation cabins of varying size and amenities, depending on your lodging requirements. All of our cabins have kitchens, microwaves, coffee makers, baths, and decks with BBQ grills. Many of our cabins have extra bathrooms, dishwashers, washers and dryers, air-conditioning, fireplaces and great views. All the cabins are furnished with kitchen utensils, cook ware, bed linens, and towels. For the summer vacationer there is a heated pool, playground for kids, sandy beach, and family activities. In addition there are canoes, kayaks, paddleboat, volleyball net, tether ball and sand toys. For that rainy day our lodge offers a general store with groceries, tackle, gifts and a rec room. American Meal plans are offered in the lodge dining room featuring delicious home cooked meals.



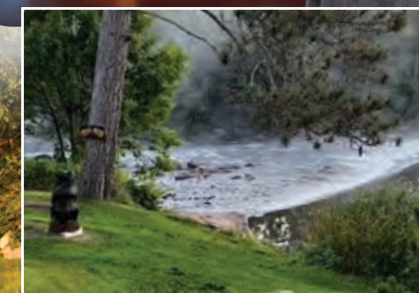
WIRELESS INTERNET IS  
AVAILABLE IN THE LODGE  
AND IN ALL CABINS.



## ATTRACTIONS

THE LAKE VERMILION AREA HAS MANY LOCAL ATTRACTIONS BESIDES IT'S WILDERNESS BEAUTY. THERE ARE MANY POPULAR THINGS TO DO AND SEE, FROM TOURING A REAL UNDERGROUND MINE, SEEING BEAR IN THEIR NATURAL HABITAT, SHOPPING THE UNIQUE AREA STORES, OR GOLFING AT A WORLD-CLASS GOLF COURSE. HERE IS A PARTIAL LIST OF AREA ATTRACTIONS. WE'LL BE HAPPY TO GIVE YOU DIRECTIONS:

- SOUDAN UNDERGROUND MINE STATE PARK
- GIANTS RIDGE 18-HOLE CHAMPIONSHIP GOLF COURSE
- VINCE SCHUTTE BEAR SANCTUARY
- FORTUNE BAY CASINO
- 18-HOLE CHAMPIONSHIP GOLF COURSE
- INTERNATIONAL WOLF CENTER
- IRONWORLD USA
- MINNESOTA MUSEUM OF MINING
- UNITED STATES HOCKEY HALL OF FAME



## CHASE TROPHIES OR A FISH FRY!

THREE SEASON FISHING FOR: WALLEYES, MUSKIES, PANFISH, PIKE, LM & SM BASS & LAKE TROUT (DAY TRIP PORTAGE)

(800) 325-5780 WWW.VDL.COM





# FAMILY- AND FISHERMEN-FRIENDLY ACCOMMODATIONS TO FIT ANY SIZE GROUP

**PRIME SEASON:** June 8 - August 16, 2024  
**NON-PRIME SEASON:** Any dates outside of Prime Season  
 To determine daily cabin rental rate...divide the weekly rate by six.



## VERMILION DAM LODGE RESORT MAP



## THE SUPERIOR NATIONAL FOREST IS RIGHT OUTSIDE YOUR DOOR!

### ASPEN 3 BEDROOMS



This beautiful three bedroom lakeside cabin features a great view over the bay. Three bedrooms, two full baths, kitchen with a dishwasher, gas fireplace, large deck and a dock right in front of the cabin. Wi-Fi included.



**Prime Season: \$2,750/wk**  
6 or less people  
**Off Season: \$2,550/wk**  
6 or less people

### SPRUCE 3 BEDROOMS



Beautiful 3 bedroom, 1 bath, large deck, 4 season porch, fireplace, kitchen with a dishwasher, vaulted ceilings in kitchen and living room. Beautiful view overlooking bay. Wi-Fi included.



**Prime Season: \$2,750/wk**  
6 or less people  
**Off Season: \$2,550/wk**  
6 or less people

### KNOTTYPINE 3 BEDROOMS



Includes three bedrooms, two baths, large deck, and a great view from the living room, washer, dryer and kitchen table. This beautiful cabin sits right on the water's edge with a dock right off the deck. Wi-Fi included.



**Prime Season: \$2,750/wk**  
6 or less people  
**Off Season: \$2,550/wk**  
6 or less people

### LAKESIDE 3 BEDROOMS



Beautiful view looking to the southeast, just steps away from the water. This cabin features 3 bedrooms, air-conditioning, a kitchen, full bath, a screened porch, fire ring, large deck and dock right in front of the cabin. Wi-Fi included.



**Prime Season: \$2,750/wk**  
6 or less people  
**Off Season: \$2,550/wk**  
6 or less people

### CHALET 2 BEDROOMS



This cozy two bedroom has a great view of the whitewater rapids of the Dam. The cabin features a vaulted ceiling, a kitchen with a dishwasher, washer and dryer, Living room area and Large deck. Wi-Fi included.



**Prime Season: \$1,900/wk**  
4 or less people  
**Off Season: \$1,700/wk**  
4 or less people

### HILLCREST 2 BEDROOMS



Just a few steps away from the pool and close to the main dock, this cabin features two bedrooms, air-conditioning, a kitchen, dishwasher, a screened porch and a deck. Wi-Fi included.



**Prime Season: \$1,650/wk**  
4 or less people  
**Off Season: \$1,550/wk**  
4 or less people

### STUDIO 1 BEDROOM



One bedroom cabin perfect for one or two people that want a value on a short stay. Cabin includes refrigerator, microwave, air conditioning, two twins beds (that can be made into a king upon request), full bath, gas grill and deck.

**All Season: \$850/wk**  
1 or 2 people

### SUNUP 4 BEDROOMS



Located near the pool with a beautiful elevated view of the lake and resort. This cabin features four bedrooms, one bath, large kitchen with a dishwasher, a large screened porch and deck. Wi-Fi included.



**Prime Season: \$2,550/wk**  
8 or less people  
**Off Season: \$2,350/wk**  
8 or less people

### SANDCASTLE 3 BEDROOMS



Located next to the beach and the playground, this cabin features three bedrooms, two full baths, a kitchen with a dishwasher, a screened porch and a deck. Wi-Fi included.



**Prime Season: \$2,450/wk**  
6 or less people  
**Off Season: \$2,250/wk**  
6 or less people  
**"PET FRIENDLY"** (see policies and fees)



# MODERN, COMFORTABLE NORTHWOODS CABINS WITH TRUE "UPNORTH" FEEL.

**PRIME SEASON:** June 8 - August 16, 2024  
**NON-PRIME SEASON:** Any dates outside of Prime Season  
 To determine daily cabin rental rate...divide the weekly rate by six.

## HILLSIDE 2 BEDROOMS



**Prime Season: \$1,650/wk**  
4 or less people

**Off Season: \$1,550/wk**  
4 or less people

Two bedroom, one bath cabin close to water and resort dock. Cabin features both a deck and screened porch, full kitchen with a dishwasher, air-conditioning, living room area with a futon. Wi-Fi included.

## BALSAM 2 BEDROOMS



**Prime Season: \$1,900/wk**  
4 or less people

**Off Season: \$1,800/wk**  
4 or less people

This cabin features a loft sleeping area and bedroom on the main floor. One bath, full kitchen with a dishwasher, large deck, cabin shares dock space with other cabins located on the point. Wi-Fi included.

## SUNDOWN 4 BEDROOMS

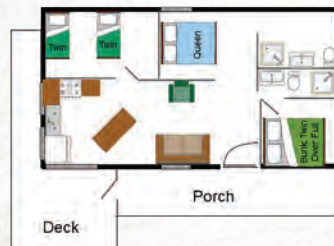


**Prime Season: \$2,900/wk**  
8 or less people

**Off Season: \$2,700/wk**  
8 or less people

Located near the pool with a nice view of the lake and resort. This cabin features four bedrooms, two full baths, washer and dryer, kitchen with a dishwasher and large deck. Wi-Fi included.

## MORNINGSIDE 3 BEDROOMS



**Prime Season: \$2,750/wk**  
6 or less people

**Off Season: \$2,550/wk**  
6 or less people

Features two baths, 3 bedrooms, large deck, dishwasher, right on the water with a great view. Wi-Fi included.

## LAKEVIEW 3 BEDROOMS



**Prime Season: \$2,750/wk**  
6 or less people

**Off Season: \$2,550/wk**  
6 or less people

This cabin sits up overlooking the resort and features three bedrooms, two baths, dishwasher, washer and dryer, vaulted living room area, four season porch. Beautiful elevated view of the resort/lake. Easy access/walkway to pool, lodge and main dock. Wi-Fi included.

## WHITEWATER 3 BEDROOMS



**Prime Season: \$2,750/wk**  
6 or less people

**Off Season: \$2,550/wk**  
6 or less people

This cabin has a beautiful view overlooking the Vermilion Dam and Lake Vermilion. Cabin features 3 bedrooms, one bath, vaulted ceilings, full kitchen with dishwasher, four season porch, washer and dryer and a large deck. Wi-Fi included. By request, any 2 twin beds can be converted into a king.

## FISHING QUARTERS WEST 1 BEDROOM



**Prime Season: \$1,500/wk**  
3 or less people

**Off Season: \$1,400/wk**  
3 or less people

**"PET FRIENDLY"** (see policies and fees)

West half of Fisherman duplex. This cabin features one bedroom, one full bath, kitchen, air-conditioning, living room area with a sleeping futon and deck. Wi-Fi included.

## FISHING QUARTERS EAST 2 BEDROOM



**Prime Season: \$1,600/wk**  
4 or less people

**Off Season: \$1,500/wk**  
4 or less people

**"PET FRIENDLY"** (see policies and fees)

Fisherman quarters east (half of duplex), two bedrooms, sleeps four, located near close to main dock. Includes two bedrooms, one bath, air-conditioning, kitchen with a dishwasher and deck. Wi-Fi included.

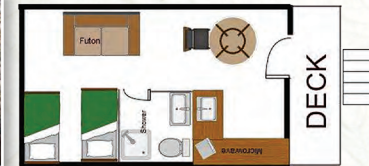
## NORWAY 5 BEDROOMS



This beautiful cabin features a great view over the bay. Dock directly in front, 5 bedroom and 3 baths. Washer and dryer, air-conditioning, large kitchen, fireplace, fantastic view. Wi-Fi included.

**Prime Season: \$4,400/wk** 10 or less people  
**Off Season: \$4,200/wk** 10 or less people

## MUSKY HUT 1 BEDROOM



**Prime Season: \$1,300/wk**  
2 people

**Off Season: \$1,250/wk**  
2 people

**"PET FRIENDLY"** (see policies and fees)

One bedroom with two twins, full bath, refrigerator, microwave, sink and deck with BBQ grill. Cabin has heat and A/C. Designed for fisherman who are looking for nice accommodations, with basic amenities and best value. Wi-Fi included.

## AERIE 6 BEDROOMS



Perfect for reunions, larger groups, features six bedrooms, two fireplaces, three bathrooms, air-conditioning, large kitchen area featuring 2 dishwashers, two refrigerators/freezers, great view of the lake with whitewater rapid running alongside providing a relaxing sound. Cabin also has its own fire pit. Wi-Fi included.

**Prime Season: \$4,600/wk**  
14 or less people

**Off Season: \$4,400/wk**  
14 or less people



## BAYVIEW 1 BEDROOM



One bedroom cabin perfect for one or two people that want the best value on a short stay. Cabin includes kitchen, bath and shower, two twin beds that can be converted to king upon request, heat and a/c, large deck and porch area. Wi-Fi included.

**Prime Season: \$1,400/wk**  
2 or less people

**Off Season: \$1,300/wk**  
2 or less people

## MAPLE 1 BEDROOM



## WHITEPINE 3 BEDROOM



**NEW IN 2019** Three bedroom located on the end of the resort with a great view and private dock. Cabin features two bath, large deck, great view, Air conditioned, dishwasher, washer and dryer. Wi-Fi included.

**Prime Season: \$2,850/wk**  
4 or less people

**Off Season: \$2,700/wk**  
4 or less people



## BIRCH 1 BEDROOM



One-bedroom, one-bath, quaint cottage tucked into the side of the VDL hillside. This haven is perfect for two when you want to be just steps from the action of Lake Vermilion and have a great view of the Vermilion River Wildlife Highway. Complete with full-size Refrigerator, Stove, Microwave and WiFi, you'll have everything you need for a relaxing stay.

**Prime Season: \$1,550/wk**  
2 or less people

**Off Season: \$1,450/wk**  
2 or less people





# FISHING BOATS AND PONTOONS.

## 16.50' ALUMACRAFT ESCAPE



- Live well
- Pedestal seats
- GPS locator and trolling motor
- Running lights
- 25 HP Yamaha 4-stroke

**Daily: \$170 Weekly: \$700**

## 17' LUND EXPLORER



- 50 hp Yamaha 4-stroke
- Electric trolling motor
- Pedestal seats
- Live well
- Casting deck

**Daily: \$175 Weekly: \$800**

## 16.50' ALUMACRAFT YUKON



- 50 HP Yamaha 4-stroke outboard
- Live well
- Pedestal seats
- GPS
- Locator
- Bow-mounted trolling motor

**Daily: \$175 Weekly: \$800**

## 18' LUND TYEE GRANSPORT



- Walk Thru
- 150 hp Yamaha 4-stroke
- Bow mount trolling motor
- Live well
- Pedestal seats/Casting deck

**Daily: \$300 Weekly: \$1,300**

## 17' LUND FISHERMAN



- Walk Thru
- 150 hp Yamaha 4-stroke
- Bow mount trolling motor
- Depthfinder/GPS

**Daily: \$250 Weekly: \$1,100**

## 1650 ALUMACRAFT SC



- Side Console
- 50 hp Yamaha 4-Stroke
- Depth finder with gps
- Live well
- Bow mount trolling motor

**Daily: \$175 Weekly: \$800**

## 17.50 CRESTLINER FISH HAWK



- 115 hp Mercury 4-stroke
- Depth finder with GPS
- Bow mount trolling motor
- Livewell
- Pedestal seats

**Daily: \$250 Weekly: \$1,100**

## 1750 CRESTLINER WALK THROUGH



- Walk thru windshield
- 90 hp Yamaha 4-stroke
- Humminbird Depth finder with GPS
- Live well
- Bow mount trolling motor

**Daily: \$250 Weekly: \$1,100**

## 18' LUND FISHERMAN



- 140 hp Suzuki 4-stroke
- Depth finder with GPS
- Live well
- Bow mount Minn Kota 80lb.trolling motor

**Daily: \$250 Weekly: \$1,100**

## 1770 LUND FURY



- 90 hp Yamaha 4-stroke
- Depth finder with GPS
- Bow mount trolling motor
- Live well
- Pedestal seats

**Daily: \$250 Weekly: \$1,100**

## 18.6' G3 FISH AND SKI



- 150 hp Yahama 4-stroke
- Rod holders
- Humminbird Helix 9 with GPS & side imaging
- Bow mount Minn Kota 80lb. Terrova trolling motor
- Battery charging system
- Live wells

**Daily: \$300 Weekly: \$1,200**

## 16.5' ALUMACRAFT NAVIGATOR



- Walk-Thru Console, Pedestal seats
- 90 hp Yamaha 4-stroke
- Bow Mount Trolling Motor
- Depthfinder/GPS, Running lights
- Livewell/On board Charger

**Daily: \$250 Weekly: \$1,100**

## 22' PONTOON



- 70 hp Yamaha 4-stroke
- Depth finder with GPS
- Live well
- Comfortable seating for up to 8 people

**Daily: \$250 Weekly: \$1,200**

## 23' PONTOON



- 90 hp Mercury 4-stroke
- Canopy
- Stereo
- Depth finder with GPS
- Comfortable seating for up to 10 people

**Daily: \$250 Weekly: \$1,200**

# CUSTOM FISHING PONTOON. RESORT POLICIES.

## 23' CUSTOM FISHING

This boat was designed and customized to provide a group of fisherman a true fishing pontoon boat.



- 140 hp Suzuki 4-stroke motor
- Triple pontoons
- Center counsel steering
- Overhead rod holders/Storage bins
- Lighted aft deck/Six pedestal seats
- Bow mount Minn Kota trolling motor
- Humminbird Helix 9 fish finder with GPS & side imaging

**Daily: \$300 Weekly: \$1,300**

## 24' PREMIER PONTOON



- 90 hp Yamaha 4-stroke
- Canopy/Livewell/Depth finder with GPS
- Comfortable seating for up to 8 people

**Daily: \$250 Weekly: \$1,200**

## MEAL PLANS

If you favor not cooking on your vacation we offer a great option of home cooked meals served in the lodge or delivered to your cabin. Our Chef Rick has over 30 year experience. Meal options include the standard American Plan which consists of breakfast and dinner or if you don't want to be on a schedule and prefer more flexibility you still have the option to request individual meals.

Many of our guests that have experienced Rick's cooking have told us they will always take the Meal Plan when coming to VDL.

## MEAL PLAN RATES

### ADULT AMERICAN PLAN

Breakfast and Dinner  
\$400/week/person\*

### AMERICAN PLAN

Kids (under 10)  
Breakfast and Dinner  
\$250/week/kid\*

\*Daily food plans available



## RESORT POLICIES

**RESERVATIONS:** Two-night minimums stay required (one-bedroom cabins only). Three-night min stay cabins two to six bedrooms. Daily rates of less than a week booking is calculated by dividing the weekly rate of any cabin by six.

**CHECK IN /OUT TIMES:** Our prime season weekly reservation check-in time is 5:00 p.m. on Saturday and check out is 8:00 a.m. the following Saturday. Please plan your arrival to coincide with check-in time. during non-prime season early check in and later check out times can be adjusted with prior request.

**DEPOSITS:** A deposit of \$ 300 is required for each weekly cabin rental. (Exceptions are Aerie and Norway cabins which require a \$600 deposit) Partial weeks require 50% of the normal deposit. Receipt of your deposit will confirm your reservation. A deposit must be received within 7 days of booking your reservation either by credit card or check. Please mail deposits: Vermilion Dam Lodge, PO Box 1105 Cook, Mn, 55723. Remaining balance is due prior to check out.

**CANCELLATIONS:** Receipt of your deposit guarantees that space is reserved for you. In return you are financially responsible for the cost of the entire reservation. Full payment is owed if you cancel less than 90 days prior to your reservation arrival date. Reservation cancellations that fall 90 days or more from scheduled arrival date will be entitled to a deposit refund minus a \$50 service fee.

**PET POLICY:** With respect to other guests, we would like to encourage our guests to leave their pets at home. However, we do have some cabins that allow pets (Fishing Quarters West and East, Sandcastle, and Musky Hut.) Only one pet is allowed per cabin. Pet fee of \$50/day or \$350/week will apply. We reserve the right to not accept certain breeds and large size animals. Guests bringing pets are always required to keep them on a leash and be responsible for the conduct and clean up while on resort grounds. No exceptions please. Guests that arrive with pets without prior approval or cabins that do not allow pets will be not be able to check in unless they board their pet in a local kennel.

**BOAT RENTALS:** Vermilion Dam Lodge only rents boats to registered cabin guests.



# SPECIAL EVENTS; WALLEYES, MUSKIES AND MORE.

VERMILION DAM LODGE OFFERS SPECIAL FISHING EVENTS FOR ANGLERS OF ALL SKILL LEVELS.

Learn from pros and local guides that know how to target Lake vermillion walleye and muskies. A valuable classroom and in-the-boat experience.

Here are photos from past events:



## Fall WALLEYE UNIVERSITY September 19-22, 2024

A SCHOOL DESIGNED TO MAKE YOU A BETTER FISHERMAN USING YOUR ELECTRONICS FOR WALLEYE AND EVERY OTHER SPECIES.

**\$890 PER PERSON** plus tax

Check-in Thursday, September 18 in the afternoon  
Check out Sunday, September 22 - after lunch.

## Fall WALLEYE UNIVERSITY “TROPHY QUEST” September 26-29, 2024

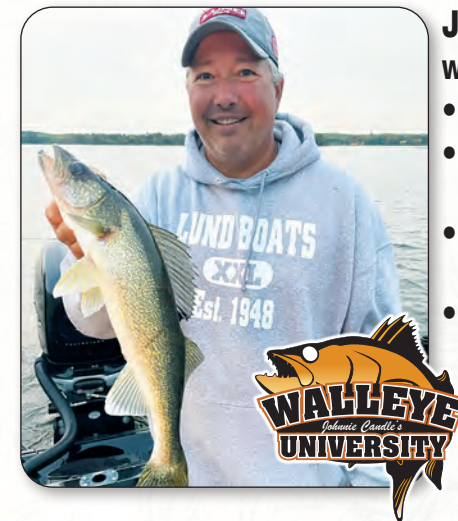
A SCHOOL FOCUSED ON LOCATING LARGER FISH.

**\$890 PER PERSON** plus tax

Check-in Thursday, September 25 in the afternoon  
Check out Sunday, September 29 - after lunch.

### Both WALLEYE UNIVERSITIES INCLUDE:

- Classroom combined with on-the-water One-on-One instructor training
- Learn how to maximize use of your electronics with gps mapping, structure identification, use of side and down imaging
- Learn deadly pro tournament techniques
- 3 nights lodging, boat docking, bait & ice
- breakfast, lunch & dinner
- limited to 60 people



#### JOHNNIE CANDLE

[www.johnniecandle.com](http://www.johnniecandle.com)

- National Walleye Champion
- 46 Walleye Tournament placements in 18 years
- Full-time professional fisherman/educator
- Developed and teaches “Walleye University”

## LARRY RAMSELL MUSKY OUTING October 3rd-6th, 2024

THE OUTING COMBINES INFORMATION SHARING, NIGHTLY PRESENTATIONS AND DISCUSSIONS WITH TOP MUSKY GUIDES OF LAKE VERMILION INCLUDING LARRY RAMSELL.

**\$750 PER PERSON**

#### MUSKY OUTING INCLUDES:

- Lodging plus breakfast, lunch & dinner
- Nightly presentations & strategy sessions
- Every attendee gets a half-day guide trip
- A variety of raffle prizes throughout the weekend
- A non-competitive event for sharing knowledge



“AS SEEN ON  
KEYES OUTDOORS”

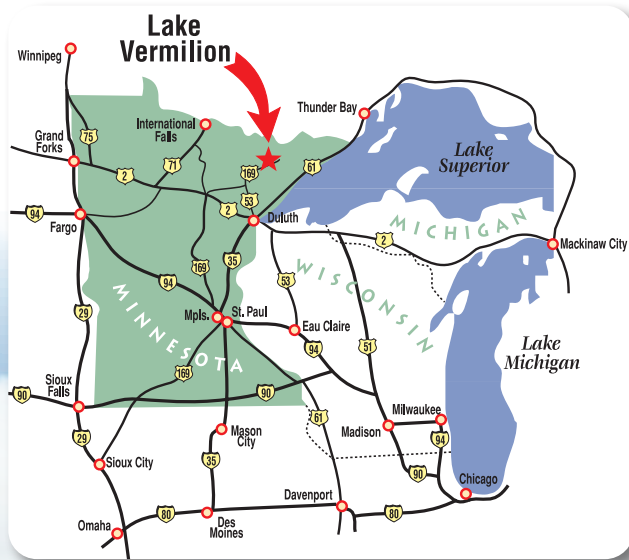
Deposit for all events: \$100/person. Cancellations within 30 days of the start of the event will not be refunded.

For more information on these events: [VDL.com](http://VDL.com) 800-325-5780



# ONE OF NORTHERN MINNESOTA'S FINEST RESORTS

**ALL ROADS LEAD TO LAKE VERMILION.**



*Avid sports enthusiasts can explore endless miles of reefs, sunken islands, drop-offs and underwater structures for walleye, muskie, bass, northern pike, crappie, and bluegill. More than 1,200 miles of shoreline and 365 islands provide the perfect backdrop for a relaxing and enjoyable vacation exploring the many protected bays and inlets of Lake Vermilion.*

*Since 1969, The Department of Natural Resources has been stocking Walleye in Lake Vermilion and maintain a hatchery on the lake from which most all northern Minnesota lakes are stocked. In the past few years, in excess of 33,000,000 Walleye have been returned annually to Lake Vermilion from the DNR hatchery.*

*That, combined with "catch and release" practices, assures future fish populations and memorable vacations for anglers. More than 40,000 acres of sky blue waters invite you to experience days of unmatched natural displays of wildlife, breathtaking scenery, and fabulous sunsets. Sandy beaches, water-skiing, canoeing, and sailing entertain guests of Lake Vermilion.*

**Vermilion Dam Lodge, Box 1105, Cook, MN 55723**

**1-800-325-5780    [www.vdl.com](http://www.vdl.com)**

